

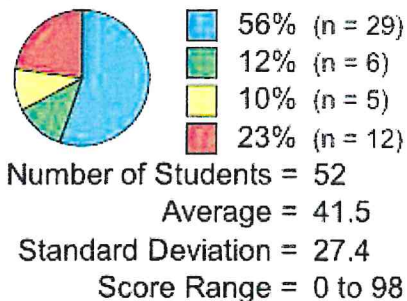
# Willow Canyon

2021-22  
Mid-Year Data

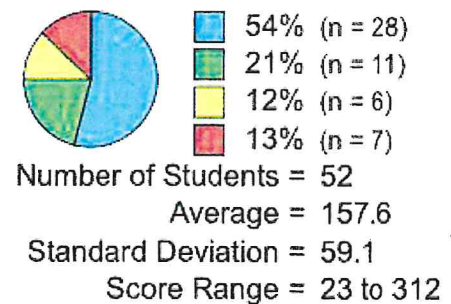
# Kindergarten Reading

## Beginning of Year

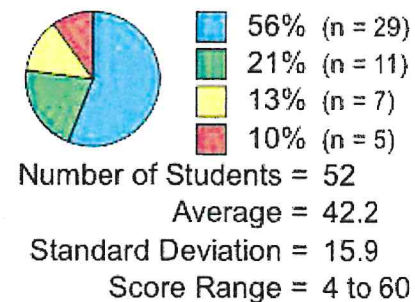
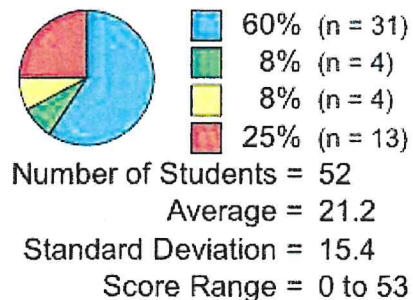
### Reading Composite Score



## Middle of Year



### First Sound Fluency

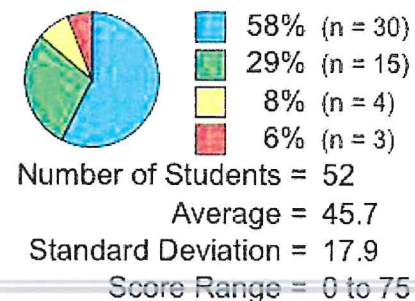


### Letter Naming Fluency

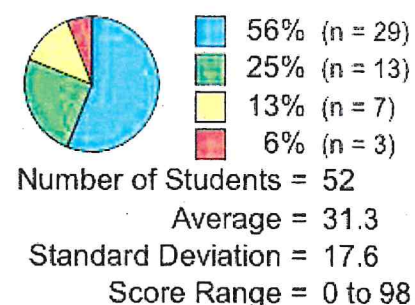
Number of Students = 52  
Average = 20.3  
Standard Deviation = 15.2  
Score Range = 0 to 62

Number of Students = 52  
Average = 38.5  
Standard Deviation = 16.6  
Score Range = 4 to 80

### Phoneme Segmentation Fluency



### NWF Correct Letter Sounds

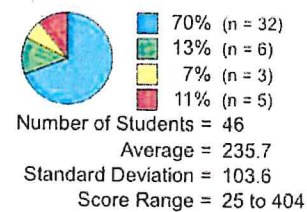
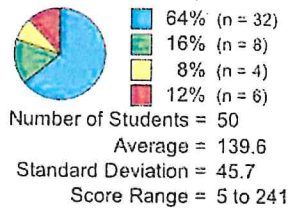


# 1st Grade Reading

## Beginning of Year

## Middle of Year

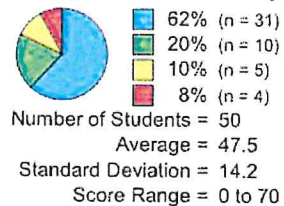
### Reading Composite Score



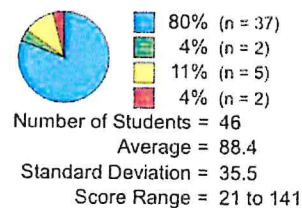
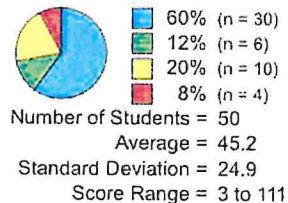
### Letter Naming Fluency

Number of Students = 50  
Average = 46.9  
Standard Deviation = 14.8  
Score Range = 0 to 76

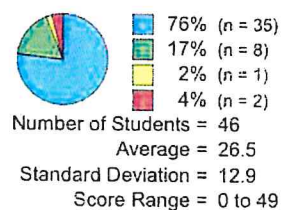
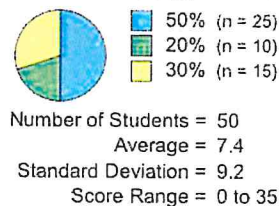
### Phoneme Segmentation Fluency



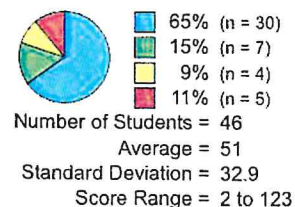
### NWF Correct Letter Sounds



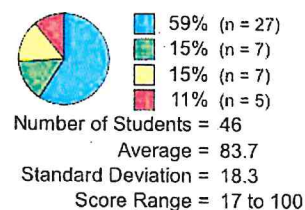
### NWF Whole Words Read



### ORF Words Correct



### ORF Accuracy

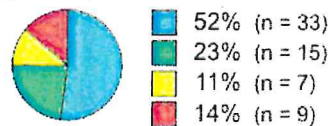


# 2nd Grade Reading

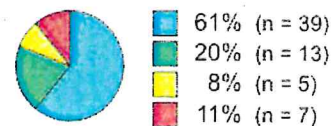
## Beginning of Year

## Middle of Year

### Reading Composite Score

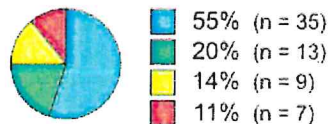


Number of Students = 64  
 Average = 206.8  
 Standard Deviation = 93.7  
 Score Range = 0 to 434



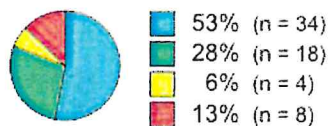
Number of Students = 64  
 Average = 280.4  
 Standard Deviation = 110.7  
 Score Range = 25 to 561

### NWF Correct Letter Sounds



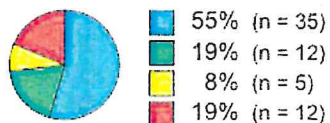
Number of Students = 64  
 Average = 83.2  
 Standard Deviation = 38.3  
 Score Range = 12 to 143

### NWF Whole Words Read

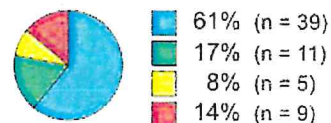


Number of Students = 64  
 Average = 24.6  
 Standard Deviation = 14.7  
 Score Range = 0 to 50

### ORF Words Correct

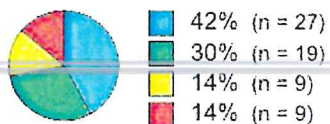


Number of Students = 64  
 Average = 77.8  
 Standard Deviation = 45.7  
 Score Range = 0 to 243

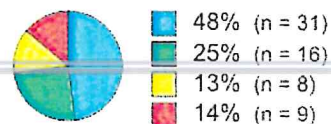


Number of Students = 64  
 Average = 104.9  
 Standard Deviation = 45.5  
 Score Range = 11 to 255

### ORF Accuracy

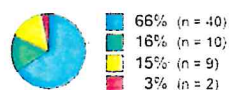


Number of Students = 64  
 Average = 89.3  
 Standard Deviation = 16.4  
 Score Range = 0 to 100

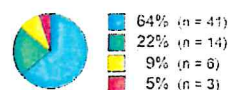


Number of Students = 64  
 Average = 95.7  
 Standard Deviation = 6.9  
 Score Range = 58 to 100

### Retell



Number of Students = 61  
 Average = 33.1  
 Standard Deviation = 20.3  
 Score Range = 0 to 94



Number of Students = 64  
 Average = 42.2  
 Standard Deviation = 21.9  
 Score Range = 5 to 94

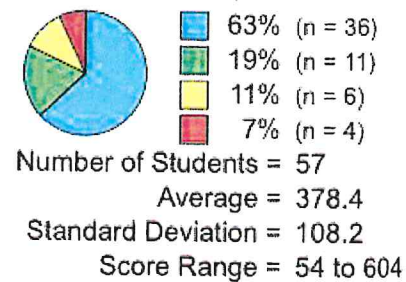
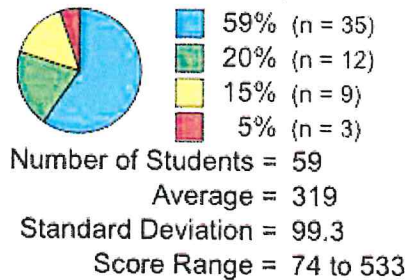


# 3rd Grade Reading

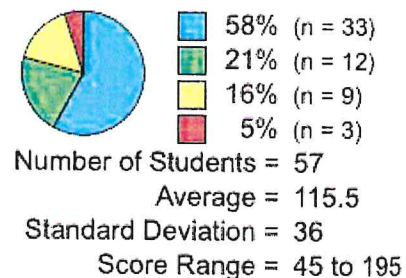
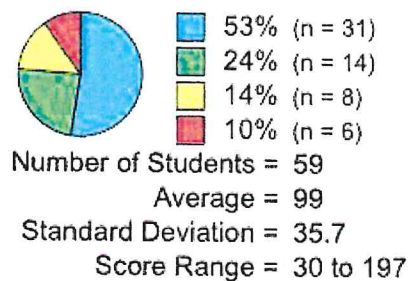
## Beginning of Year

## Middle of Year

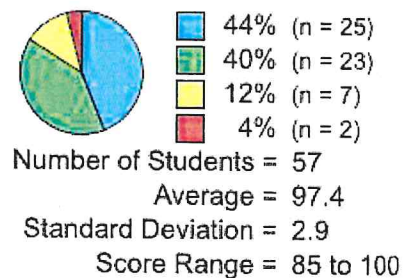
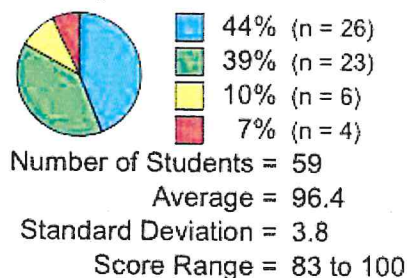
### Reading Composite Score



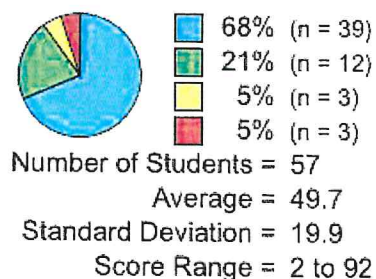
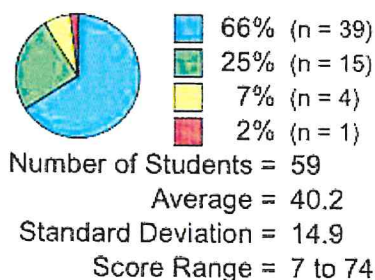
### ORF Words Correct



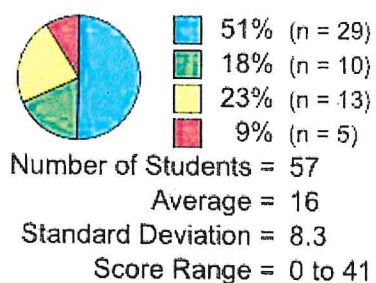
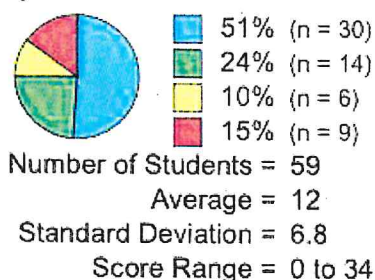
### ORF Accuracy



### Retell



### Maze Adjusted Score

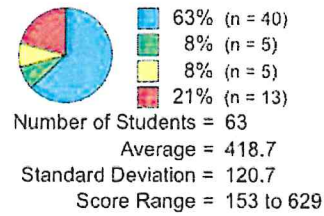
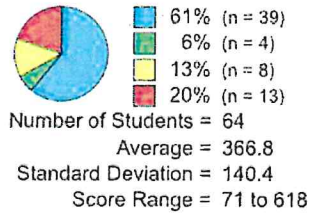


# 4th Grade Reading

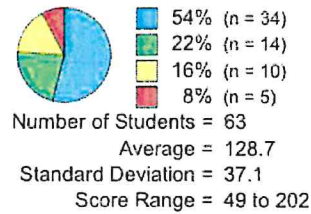
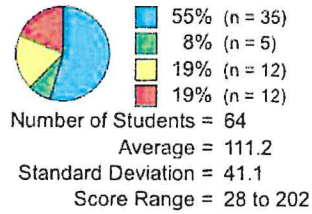
## Beginning of Year

## Middle of Year

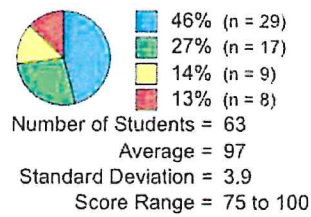
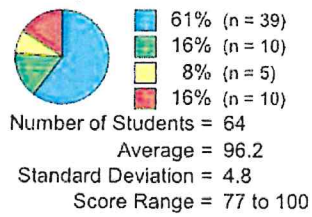
### Reading Composite Score



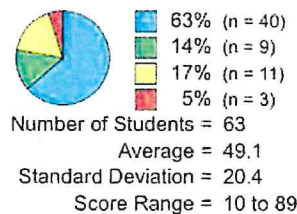
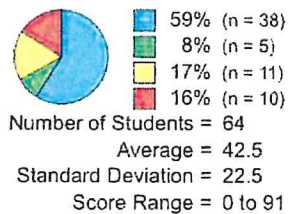
### ORF Words Correct



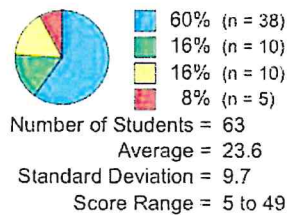
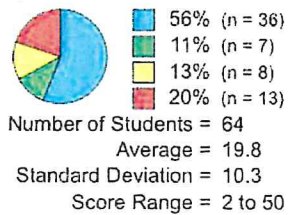
### ORF Accuracy



### Retell



### Maze Adjusted Score



## Grade 4 (61 total students)

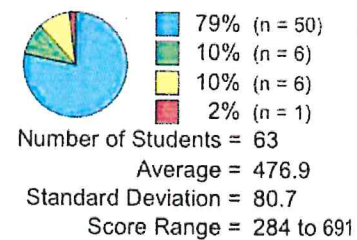
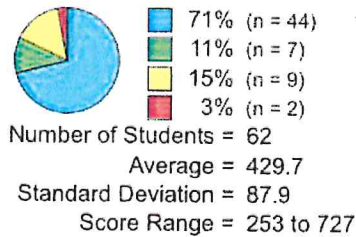
PERFORMANCE STANDARD	FIRST TEST IN TIME PERIOD		LAST TEST IN TIME PERIOD	
	STUDENTS	PERCENTAGE OF STUDENTS	STUDENTS	PERCENTAGE OF STUDENTS
Advanced	15	25%	22	36%
Proficient	16	26%	11	18%
Basic	16	26%	18	30%
Below Basic	14	23%	10	16%

# 5th Grade Reading

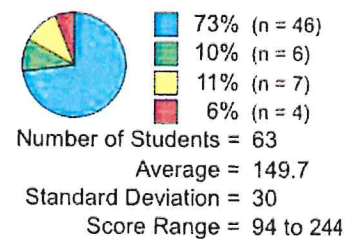
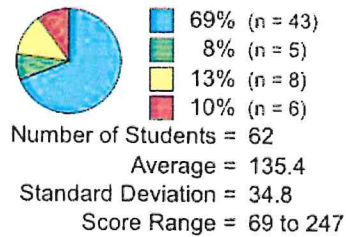
## Beginning of Year

## Middle of Year

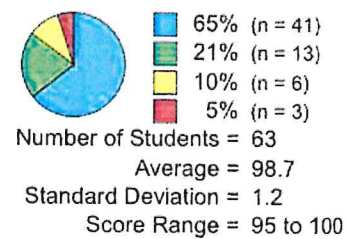
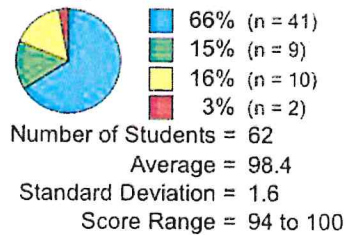
### Reading Composite Score



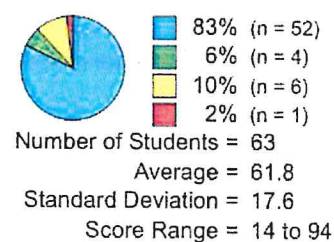
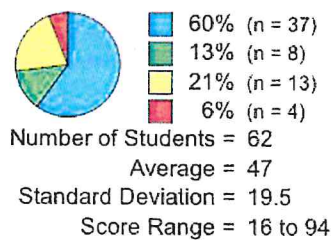
### ORF Words Correct



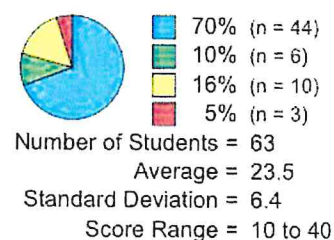
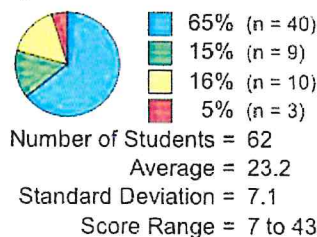
### ORF Accuracy



### Retell



### Maze Adjusted Score



## Grade 5 (62 total students)

PERFORMANCE STANDARD	FIRST TEST IN TIME PERIOD		LAST TEST IN TIME PERIOD	
	STUDENTS	PERCENTAGE OF STUDENTS	STUDENTS	PERCENTAGE OF STUDENTS
Advanced	32	52%	40	65%
Proficient	12	19%	11	18%
Basic	13	21%	9	15%
Below Basic	5	8%	2	3%

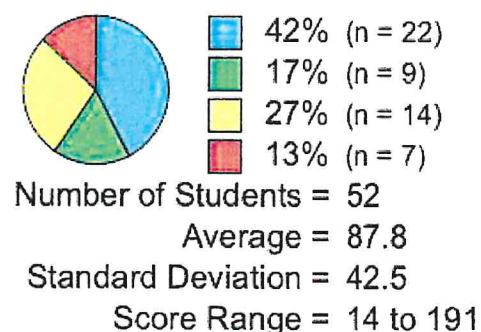
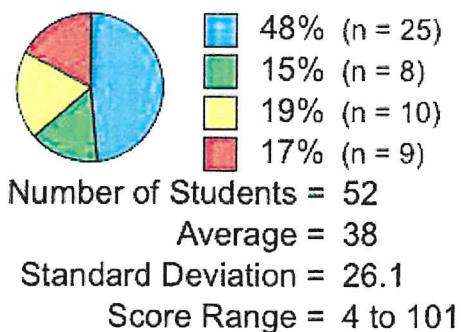


# Kindergarten Math

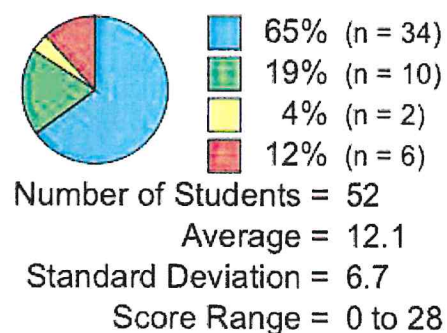
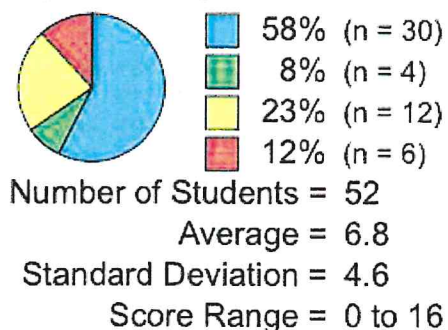
## Beginning of Year

## Middle of Year

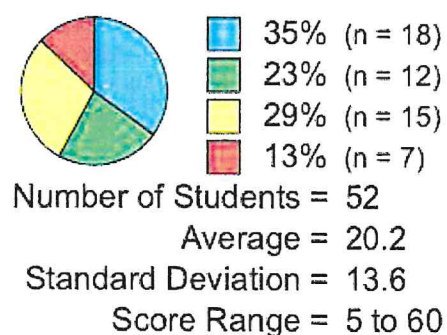
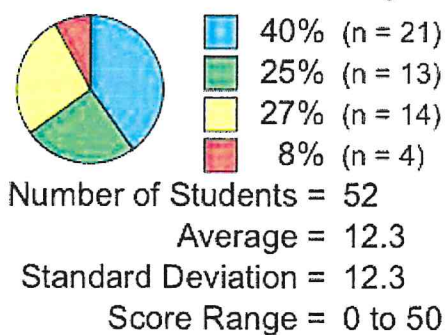
### Math Composite Score



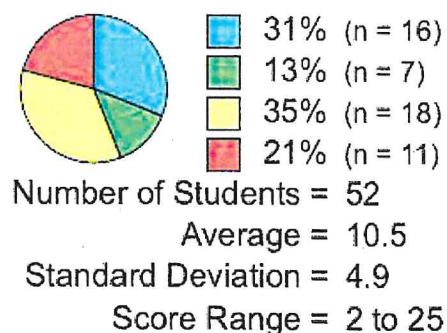
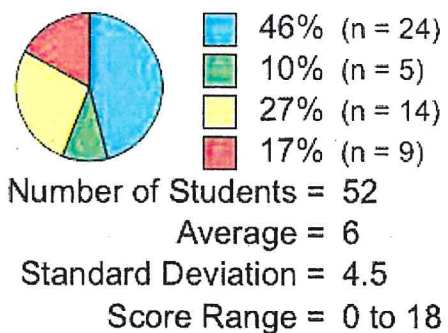
### Beginning Quantity Discrimination



### Number Identification Fluency



### Next Number Fluency



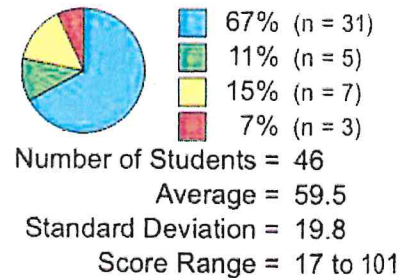
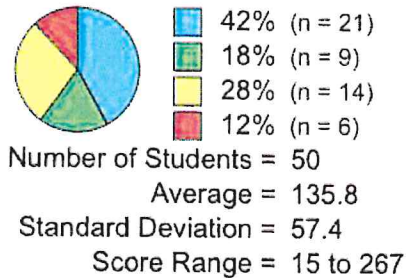


# 1st Grade Math

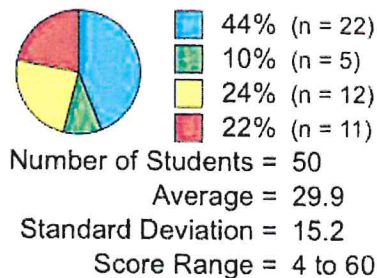
## Beginning of Year

## Middle of Year

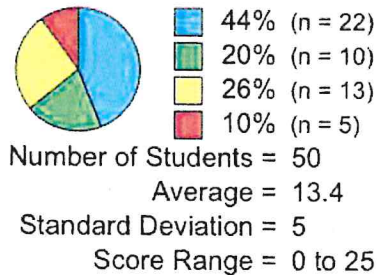
### Math Composite Score



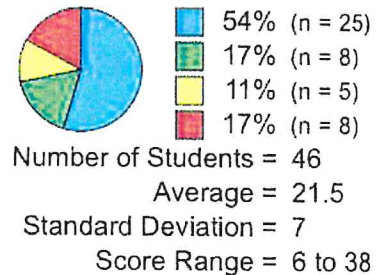
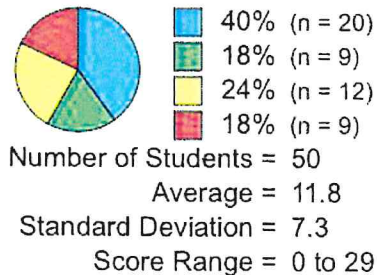
### Number Identification Fluency



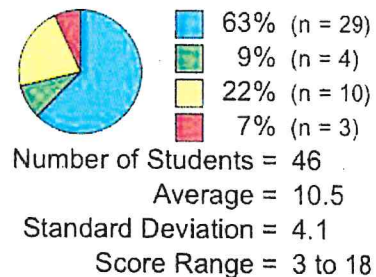
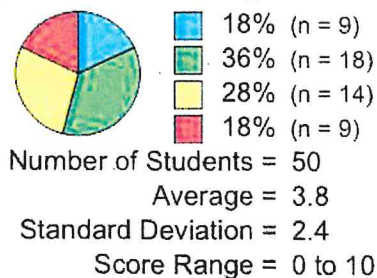
### Next Number Fluency



### Advanced Quantity Discrimination



### Missing Number Fluency

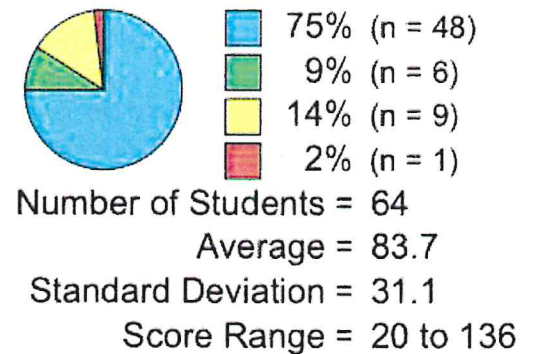
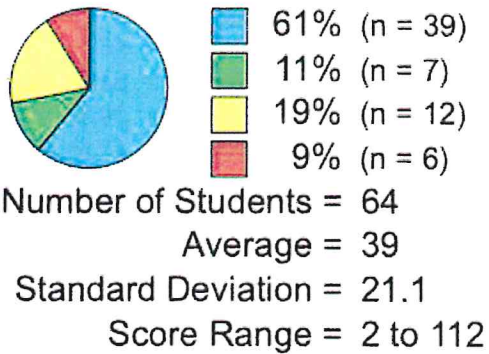


# 2nd Grade Math

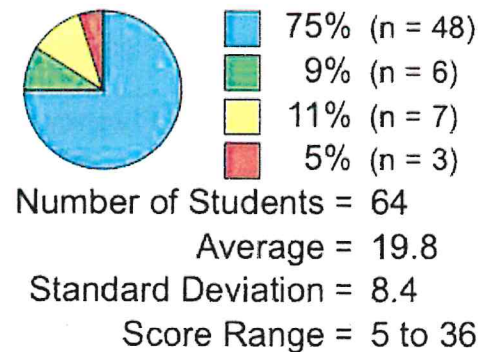
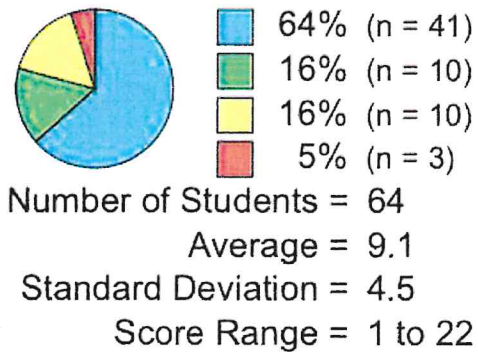
## Beginning of Year

## Middle of Year

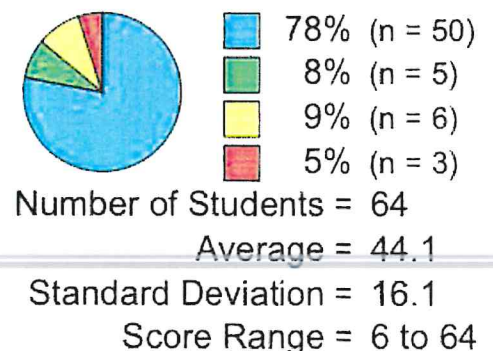
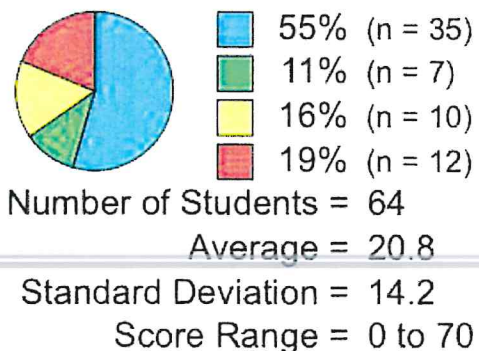
### Math Composite Score



### Computation



### Concepts and Applications

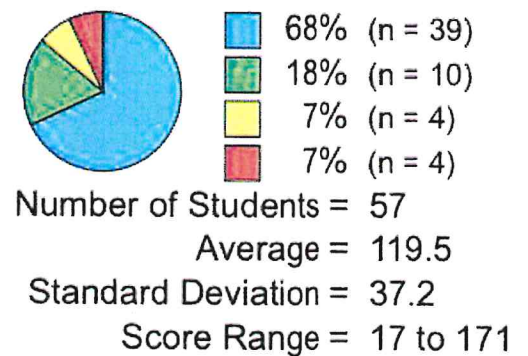
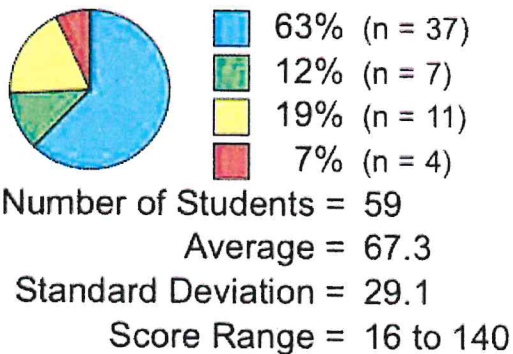


# 3rd Grade Math

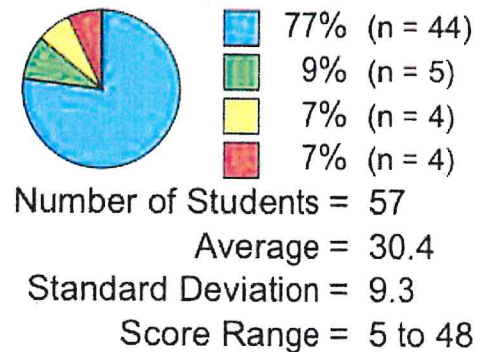
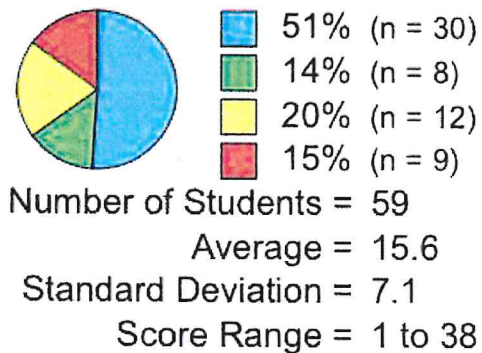
## Beginning of Year

## Middle of Year

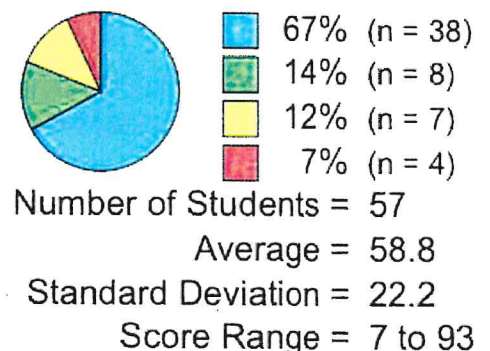
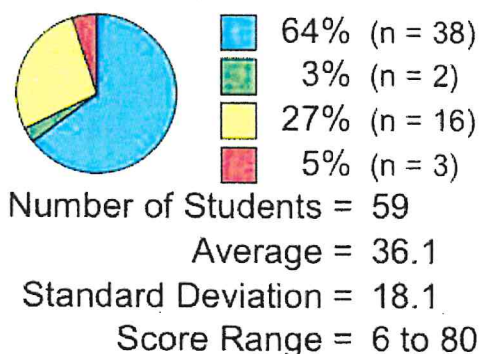
### Math Composite Score



### Computation



### Concepts and Applications



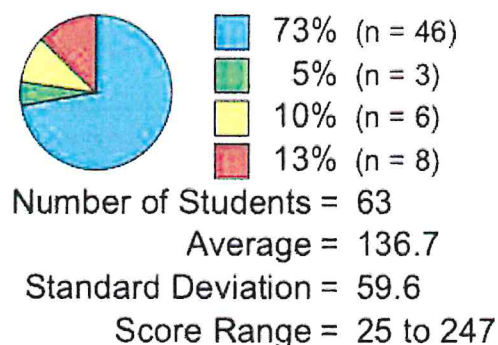
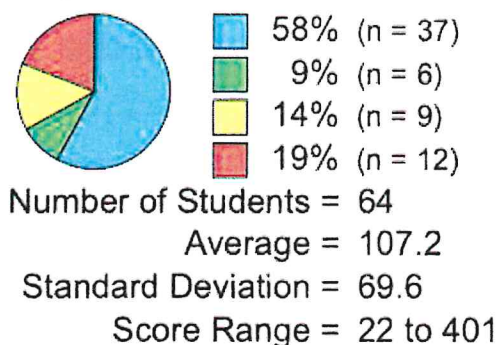


# 4th Grade Math

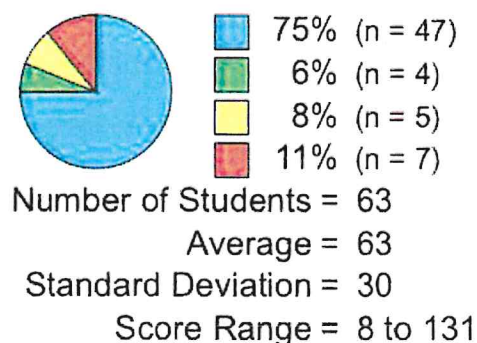
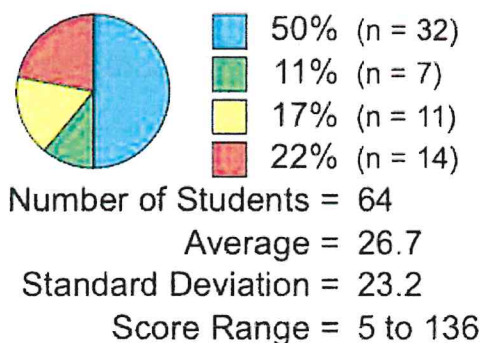
## Beginning of Year

## Middle of Year

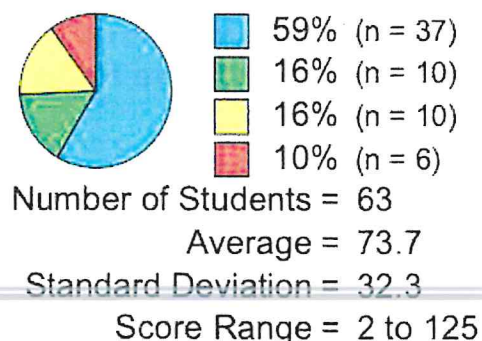
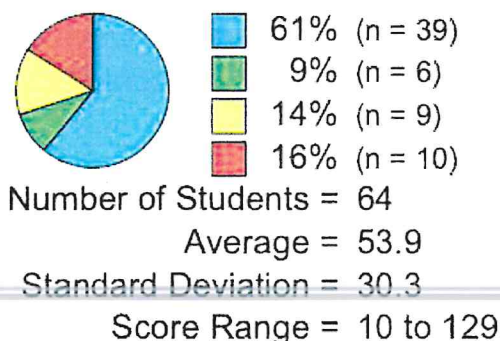
### Math Composite Score



### Computation



### Concepts and Applications

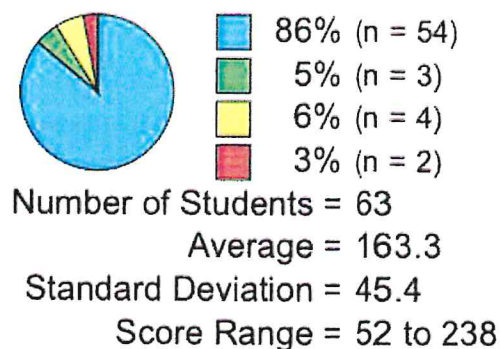
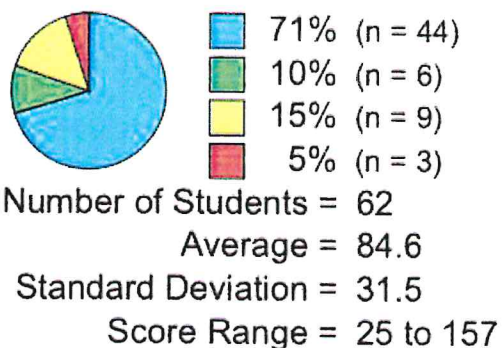


# 5th Grade Math

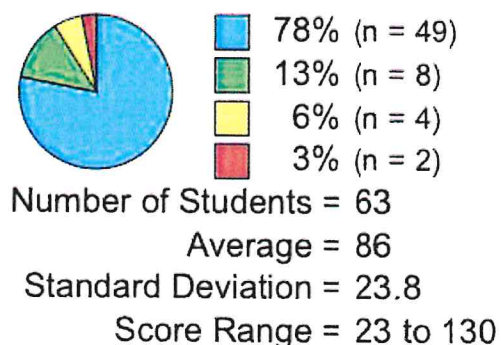
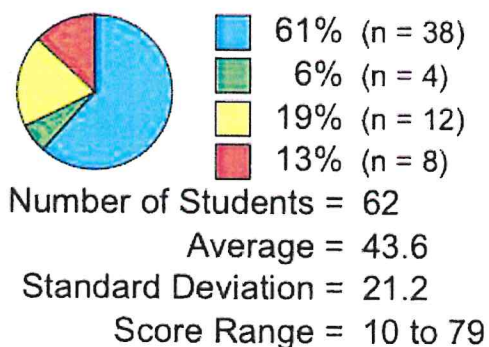
## Beginning of Year

## Middle of Year

### Math Composite Score



### Computation



### Concepts and Applications

